

Sophonix Co., Ltd

Add: Rm 301, Block 19A, No. 8 Liangshuihe 2nd Street, Economical & Technological Development Zone, Beijing, China
Tel: (86) 010-67898607, 400-898-5660
Website: en.sophonix.net

TBI (Traumatic brain injury)	
<div><div></div></div>	GFAP
<div><div></div></div>	PGP 9.5 (UCH-L1)
	S100β
Cardiovascular & Cerebrovascular	
<div><div></div></div>	CKMB
<div><div></div></div>	cTnI
	D-Dimer
	LP-PLA2
<div><div></div></div>	MYO
<div><div></div></div>	NT-proBNP
	ST2
Inflammation	
<div><div></div></div>	IL-6
<div><div></div></div>	PCT
<div><div></div></div>	SAA
<div><div></div></div>	hs-CRP
Gonadal Hormone	
	AMH
<div><div></div></div>	Estradiol 2
<div><div></div></div>	β-HCG
	free-TESTO
<div><div></div></div>	TSH
<div><div></div></div>	LH
<div><div></div></div>	Progesterone
<div><div></div></div>	PRL
<div><div></div></div>	Testosterone
Diabetes	
	C-Peptide
	HbA1c
	IAA
	Insulin
Thyroid	
<div><div></div></div>	TSH
<div><div></div></div>	TT3
<div><div></div></div>	FT3
<div><div></div></div>	TT4
<div><div></div></div>	FT4
	TGAB
	TPOAB
Cytokine Storm	
	IL-1α
	IL-1β
	IL-2

	IL-8
	IL-10
	IL-18
<div><div></div></div>	IFN-γ
	TNF-α
	MCP-1
	GM-CSFr
	GM-CSF
	spg130
	MIP-1α
	IL-33
Gastric Function	
	PG I
	PG II
	G-17
Virus	
	Influenza A
	Influenza B
<div><div></div></div>	SARS-CoV-2 IgM
<div><div></div></div>	SARS-CoV-2 IgG
<div><div></div></div>	SARS-CoV-2 N
<div><div></div></div>	SARS-CoV-2 S1
Bone Metabolism	
	PTH
	25-OH-VD
	CT
	Elecsys β-CrossLaps
Hypertension	
	Renin
	Angiotensin I
	Angiotensin II
	Aldosterone
	Cortisol
	HCY
Maternal & Child Care	
	Vitamin B12
	Ferritin
	Folic Acid
Tumor	
	AFP
	CEA
Alzheimer Disease	
	TAU protein
	P-TAU-181
	Amyloid β-protein (1-42)

“”CE certificate



MS-Fast >>>
Automated Chemiluminescent Immunoassay
Analyzing System

SPECIFICATIONS

Size: 508*586*343mm
Weight: 30kg
Sample throughput: 8 channels
Sample type: Serum, Plasma, Whole blood
Printer: Internal thermal printer
(easy to connect external printer)
Detection time: < 20 minutes
LIS/HIS: Bidirectional

FEATURES

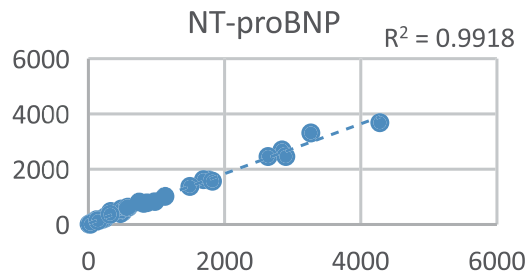
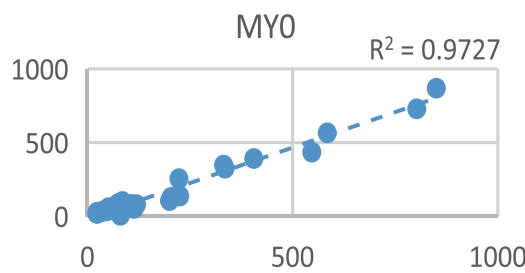
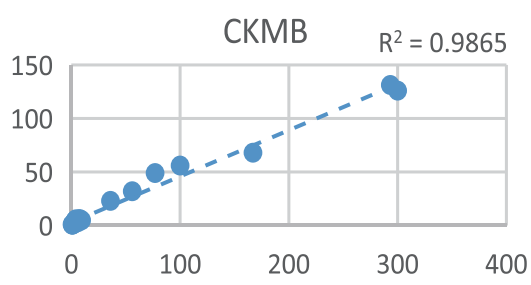
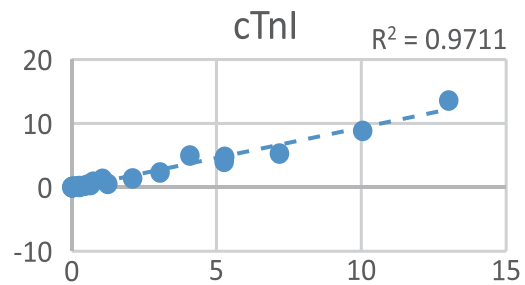
Small-size: Compact, Space-saving
Accurate: Magnetic particle chemiluminescent immunoassay method
Fast: POCT
Convenient: single strip/ each item/ each sample;
NO liquid path; easy to maintain

Sophonix Co., Ltd

CARDIOVASCULAR AND CEREbroVASCULAR PRODUCTS

Clinical application	Item	Clinical application	Item
Myocardial infarction	cTnl	Heart failure	NT-proBNP
	MYO	Early screening of cardiovascular disease	Hs-CRP
	CKMB	Atherosclerosis	LP-PLA2
	H-FABP	Deep vein thrombosis (DVT)	D-Dimer
	ST2		

The relativity between Sophonix and Company A/R.



LP-PLA2

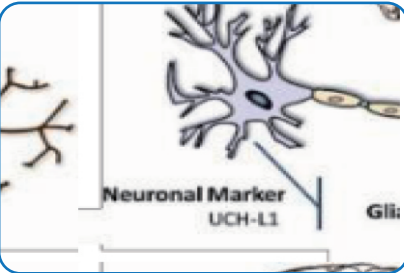
- dynamic monitoring index of vascular specific inflammation and atherosclerosis inflammation;
- risk assessment of various atherosclerosis-related cardio-cerebrovascular embolism diseases;
- evaluation of the therapeutic effect of various atherosclerosis-related cardio-cerebrovascular embolism diseases.

D-Dimer

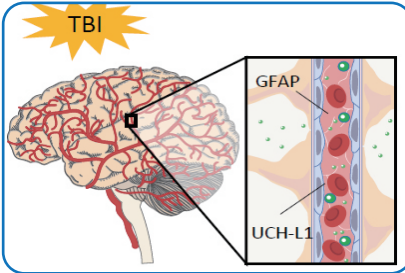
- exclusion of pulmonary embolism (PE)
- diffuse intravascular coagulation (DIC)
- screening for deep venous thrombosis (DVT)
- diagnostic and prognosis of cerebral infarction
- thrombolytic monitoring and evaluation

TBI (TRAUMATIC BRAIN INJURY)

GFAP, PGP 9.5(UCH-L1)



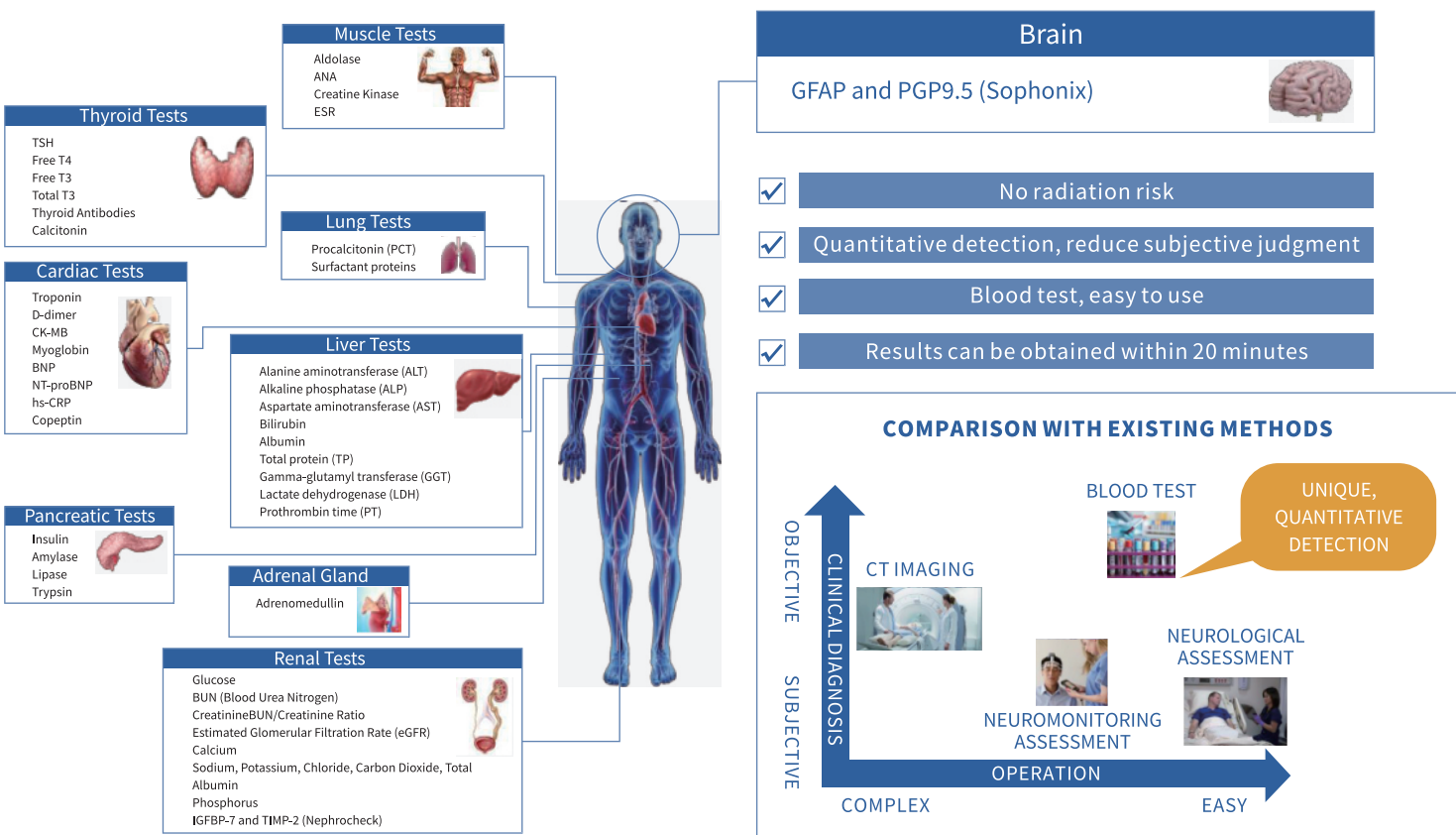
- GFAP is a cytoskeleton protein that provides structural support for astrocytes in the brain.
- PGP9.5 mainly exists in the brain nerves and is related to the regulation of cellular proteins.



- GFAP and PGP9.5 enter the bloodstream within an hour of brain trauma.

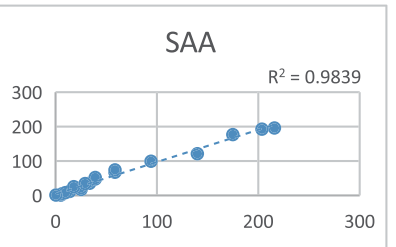
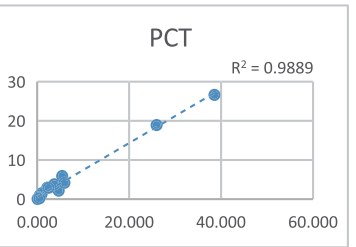
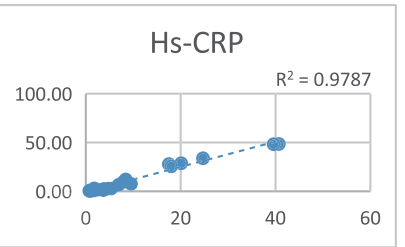


- Results of GFAP and PGP9.5 can be obtained within 20 minutes.
- CT examination is not required if both results are negative.



INFLAMMATION PRODUCTS

The relativity between Sophonix and Company A/R.



IL-6

As an acute phase reactive protein, it has the characteristics of early elevation, long duration and short half-life, which is suitable for assisting the early diagnosis, judgment and prognosis of acute phase infection.

